

## FEATURES

- **Comprehensive capturing and indexing** of message attachments as well as full message details.
- **Time-stamped and unalterable file integrity** for the archived data.
- **Archival of inbound and/or outbound SMTP traffic and attachments** (including documents, programs, and multimedia files).
- **Message file storage** with indexing parameters for: From, To, Subject, Date, Keywords, and Body Text.
- **Flexible configuration** of data redundancy rules of archived email (backup servers).
- **More than fourteen proven lines of defense for blocking spam**, including application of your content rules, allow and block lists, adult subject-line scanning, Bayesian statistical analysis, and more.



Also available as the Lightspeed Rocket, Email Manager, an appliance-based solution for high-capacity networks

## Archive and report on communications, while blocking spam

Your users rely on email for efficient communication and increasingly for shared knowledge. But email abuse can degrade network performance, leave your system vulnerable to threats, and expose users to time-wasting and offensive content.

**Lightspeed Email Manager** helps you ensure that your Acceptable Use Policies on email usage are being enforced without hindering staff's ability to work and communicate. Email Manager lets you monitor, regulate, report on, and archive all messaging communications.

## BENEFITS

**Helps you conform to federal regulations.** With Email Manager, every email is securely archived, helping you meet federal e-discovery regulations.

**Increases user productivity with powerful spam blocking.** Email Manager blocks time- and resource-draining spam. Actionable daily mail summaries sent to end users take the burden of spam management off of IT and push control to end users.

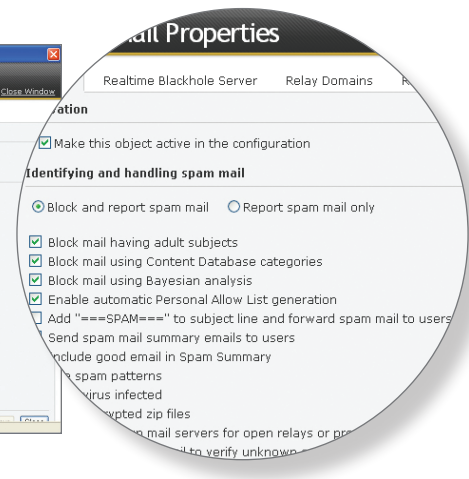
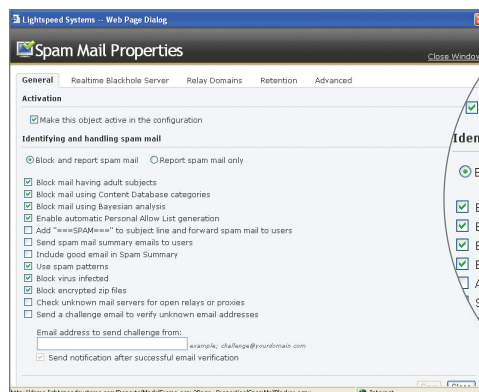
**Reduces exposure to harmful or offensive content.** Email content filtering, spam blocking, and virus detection all help ensure that email communication doesn't expose your users to offensive content, and you to potential legal liabilities.

**Frees up essential bandwidth.** Email Manager allows you to apply limitations to message file size to ensure that your network keeps running smoothly.

## Comprehensive, Customizable Reporting

Email Manager gives you access to comprehensive information about who is using your email system for what, so you can adjust Acceptable Use Policies, change allowed usages, review problems and troubleshoot issues, and plan for ongoing needs. You can see a high-level overview of email and messaging usage, and then drill down for detailed information, with reports like:

- Top Email Senders/Receivers
- Mail Traffic Overview Chart
- Spam Mail
- Virus Mail
- Suspicious Messages



## Network Solutions for Safe Online Learning

### Software solutions

Manage your school network with our all-in-one solution or its components:

 **Lightspeed**  
**Total Traffic Control**

Filter, secure, manage, and monitor with a single solution.

 **Lightspeed**  
**Web Access Manager**

Ensure safe web browsing with customizable filtering and features for safe Web 2.0 access.

 **Lightspeed**  
**Email Manager**

Archive and report on communications, while blocking spam.

 **Lightspeed**  
**Security Manager**

Block viruses, spyware, and malware with desktop and gateway security.

 **Lightspeed**  
**Network Traffic Manager**

Control traffic with bandwidth management.

 **Lightspeed**  
**Power Manager**

Manage energy use with automated power management.

### High-capacity network solutions

High-performance, scalable appliance-based school network solutions:

 **Lightspeed**  
**Rocket** Web Access Manager

Ensure safe web browsing on your high-capacity network with comprehensive, customizable filtering and features for safe Web 2.0 access.

 **Lightspeed**  
**Rocket** Email Manager

Efficiently block spam on your high-capacity network, while archiving and reporting on communications.

Customize your high-capacity network solution with the addition of our other software products.

Get a comprehensive, cost-saving solution for your high-capacity network by combining the two Rocket appliances with Security Manager, Network Traffic Manager, and Power Manager.

### About Lightspeed Systems

Lightspeed Systems Inc., founded in 2000, develops comprehensive network security and management solutions for the education market. We are committed to helping schools operate their networks effectively and efficiently, so educators can provide safe online teaching and learning environments.

### Exceptional Service and Support

Our unparalleled service and support mean our solutions will continue to deliver, long after their easy implementation. With any Lightspeed Systems solution, you can depend on:

- 24/7 live-person phone technical support.
- Comprehensive online knowledge bases.
- The Lightspeed Wiki, rife with user collaboration and product expertise.

### Professional Development & Training

Professional Services: We provide customized, collaborative professional development services to address your specific needs. For more information, please contact [ps@lightspeedsystems.com](mailto:ps@lightspeedsystems.com)

Training: To help you fully leverage your investment in Lightspeed Systems solutions, we offer an array of training options.

- Online introductory training and user demonstration videos.
- Administrator certification.
- Regional training throughout the U.S.

### Contact Us

Learn more about our products and services at [www.lightspeedsystems.com](http://www.lightspeedsystems.com)

### We Welcome Your Calls and Emails

Lightspeed Systems  
1800 19<sup>th</sup> St., Bakersfield, CA 93301

Main: 877.447.6244

Support: 800.444.9267

Sales: [sales@lightspeedsystems.com](mailto:sales@lightspeedsystems.com)

Support: <http://wiki.lightspeedsystems.com>



See the powerful reporting, policy creation, and customization features of Total Traffic Control, and our component solutions, for yourself. Schedule an online demonstration: [www.lightspeedsystems.com/demo](http://www.lightspeedsystems.com/demo)